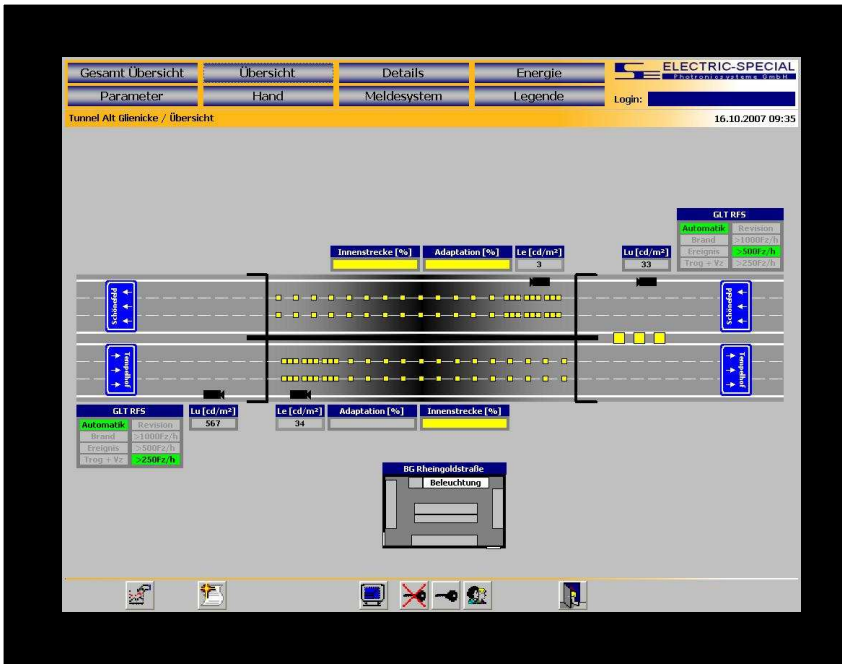
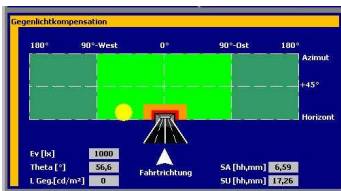


## Tunnel Lighting System LUMaticX :

Light controller - Scadasystem – Detectionsystem – Analysis compact in only one unit !



Operating on panel-PC with touch-screen :  
(Representation of tunnel reflexes in the tunnel-overview )



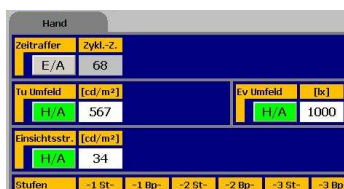
Details of light controller :  
Detailed informations of light controller program

Trigger	-ST 1-	-BP 1-	-ST 2-
Betriebsart	Steuere	Regel	Regel
Steuern EIN [cd/m²]	50,0	100,0	1000,0
Steuern AUS [cd/m²]	45,0	90,0	900,0
Steuern EIN Akt	50,0	100,0	1000,0
Steuern AUS Akt	45,0	90,0	900,0
Einbremszeit [min]	10	5	10

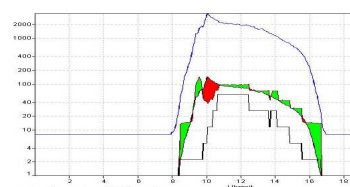
Parameters :  
Input of all relevant illumination parameters

Nr.	Uhrzeit	Datum	Zustand	Text
S 11	13:36:55	16.10.2007	K	TRH
S 10	13:36:55	16.10.2007	K	TRH
S 9	13:36:55	16.10.2007	K	TRH
S 12	13:36:55	16.10.2007	K	TRH

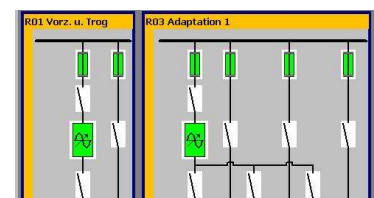
Detection system :  
Collection of all incidents with source and time-stamp, with filter- and export-function



Hand control:  
Possibility of simulation, such as for commissioning and tests



Report :  
complete analysis of recorded data



Details of further assembly sections:  
For example the energy distribution ( picture )